

Your Activities & Information
Booklet for For the Half Term Holiday
From Your FSA

Jenny Oliver

STAY SAFE & HAVE FUN.



**For other Events, Activity's or
Information
you could try the Primary Times or
the following web Sites:-**

www.parents-gide-to-plymouth.co.uk

www.plymouthoncourse.com

www.plymouthschoolsout.org.uk

www.wildlifetrust.co.uk

www.plymouth.gov.uk

www.myvue.com

www.plymouthreelcinimas.co.uk

www.nationaltrust.org.uk





IS YOUR CHILD ENTITLED TO FREE SCHOOL MEALS?

All children in Reception, Year 1 and Year 2, regardless of their parent's financial circumstances, automatically get universal infant free school meals.

But if you are eligible to claim FSM and you haven't registered, then your child could miss out on any extra support available during school holidays.

The quickest and easiest way to apply is online just click the link below to find out if you qualify and start your application today.

www.plymouth.gov.uk/freeschoolmeals

OUT WITH THE BAGS IN WITH THE BINS

Sign up for a bin delivery at
plymouth.gov.uk/gardenwaste

You old green garden waste bags will not be collected.



The Garden waste collections run from April to October and take place fortnightly.

Garden waste will no longer be collected in green bags, so you will need a green bin (delivery £15).

Register online at:

www.plymouth.gov.uk/gardenwaste

Healthy Start



Check if you're eligible at
healthystart.nhs.uk



Families in Plymouth are being urged to check if they are eligible for the Healthy Start Scheme, which offers free vouchers to be spent on food.

With Healthy Start you could get £4.25 per week of free vouchers to spend on milk, plain, fresh and frozen fruit, pulses, tinned fruit and vegetables, and infant formula milk. Find out more:

www.healthystart.nhs.uk



LITTLE SEEDS

MONDAYS 9:30AM-11:30AM £3 PER FAMILY

A fun and inclusive stay and play group for preschool children of any ability. We aim to promote learning through outdoor play and exploration in a safe and supportive environment. A welcoming and warm space for children with additional needs also.

Refreshments and activities are provided for both adults and children.

Booking preferred www.bookwhen.com/routeways
01752 300700

Charity number 1080543. Company number 3420867.



Book activities and groups for Routeways at:
<https://bookwhen.com/routeways>



ROOTED

Rooted is an inclusive activity group providing social and learning opportunities specifically for young people aged 8-14 with additional needs.

Cooking, gardening, board games, arts and craft, music. Outdoor facilities include pizza oven, fire pit, and secret castle.

Booking is essential via
www.bookwhen.com/routeways

**SUNDAYS - 10AM-1PM - £15 PER
SESSION
DEVONPORT PARK ACTIVITY CENTRE**



Devonport Park Activity Centre, Fore Street, PL1 4BU
Lucy - 01752 856702/ Main office - 01752 300700



Book activities and groups for Routeways at:
<https://bookwhen.com/routeways>

YOUTH CLUB

Social group for young people with additional needs aged 14-24. A chance to play games, chat with friends, learn new skills, baking, arts and crafts, competitions and trips out.

Alternating between Devonport Park
Activity Centre and The Beckly Centre
Thursdays - 7-9pm - £8 a session

Booking essential via
www.bookwhen.com/routeways.

Please contact us for more information on
01752 300700



Charity Number: 1080543

Company Number: 3420867



Book activities and groups for Routeways at:
<https://bookwhen.com/routeways>



TRANSITION GROUP

GROWING TOGETHER

A social and vocational group for those aged between 16 and 24 with a SEN diagnosis. Engaging in a range of community projects organised and planned by the young people. A safe environment to develop socially

FRIDAYS
10:30AM - 3:30 PM (HALF DAY OPTION)
DEVONPORT PARK ACTIVITY CENTRE



TRANSITION GROUP

OVER 18'S COMPLEX CARE

A social group for those aged 18-22 with complex additional needs transitioning between children and adult services. Engaging in a diverse range of activities such as cooking, crafts and community trips. A safe, inclusive environment to socialise and engage in leisure activities.

SUNDAYS
10:30AM - 3:30 PM AT THE BECKLY CENTRE
(WEDNESDAY SESSIONS BEING PLANNED)



Book activities and groups for Routeways at:
<https://bookwhen.com/routeways>

ART, CRAFT & LAUGHTER

Creating Healthy Minds
07880327022

We offer

Art & Craft Days

for adults with Learning Disabilities
in a small, creative, safe space



Tuesdays & Thursdays

10am – 4pm

Come for an hour or all day, the choice
is yours.

Booking essential

William Sutton Community Hall, 6 Shelley Way, St Budeaux,
Plymouth PL5 1QF



ART, CRAFT & LAUGHTER

Creating Healthy Minds
07880327022

Due to ongoing success
our

Mental Health & Wellbeing Art & Craft Group

is now open

Wednesdays & Fridays

10am – 4pm

Come for just an hour or all day, the
choice is yours.

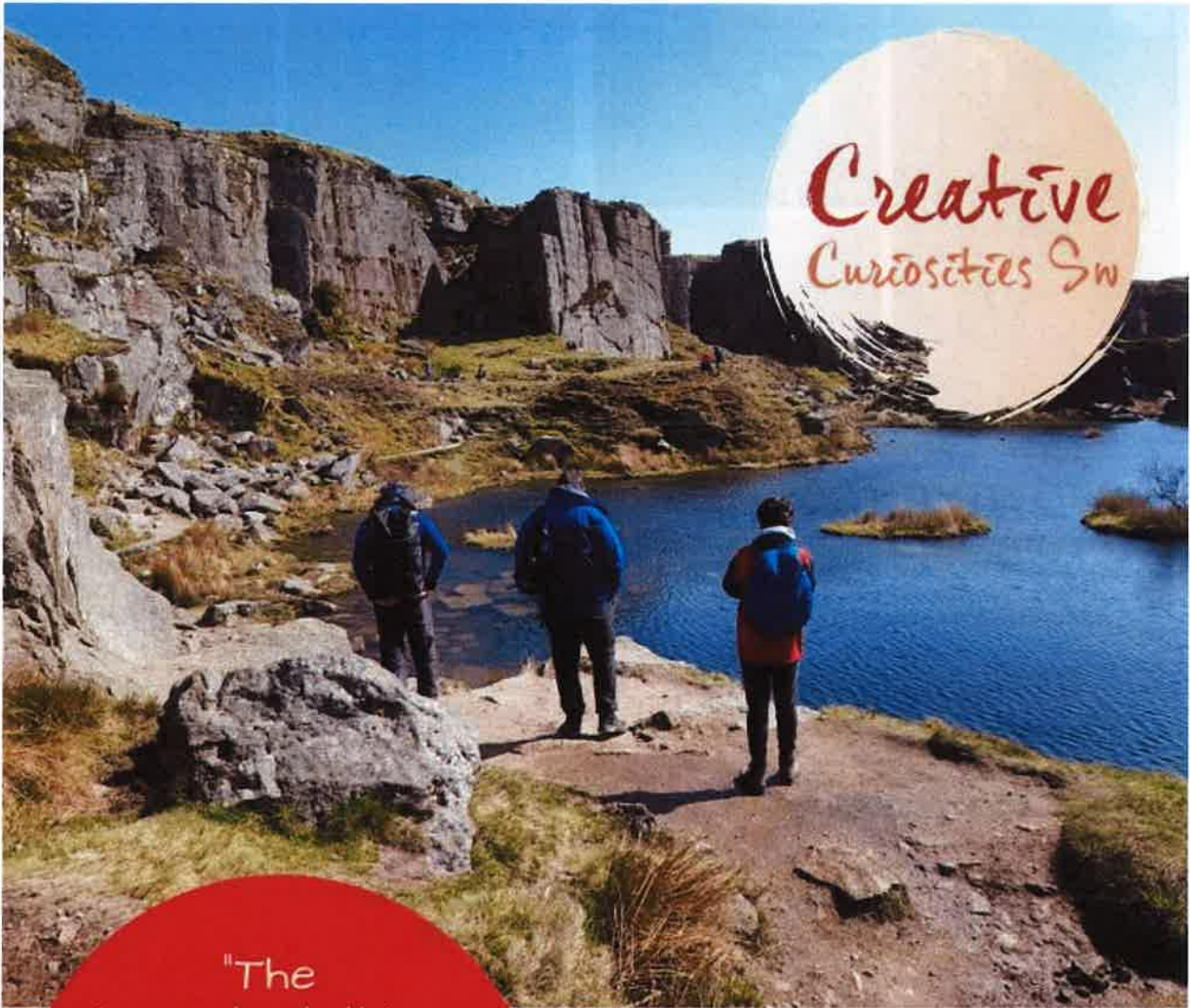
Booking essential

William Sutton Community Hall, 6 Shelley Way, St Budeaux -
Plymouth PL5 1QF





*Creative
Curiosities SW*



"The
important thing
is to not stop
questioning.
Curiosity
has its own reason
for existing."
Einstein

CREATIVE AND ADVENTUROUS ACTIVITIES

SCAN THE CODE
TO SEE
CURRENT SESSIONS
AND BOOK



The Plot, Union Street, Plymouth .
07762737620
hello@creativecuriosities.org.uk
www.creativecuriosities.org.uk

To see current sessions and to book visit:

<https://www.tickettailor.com/events/creativecuriositiessw>

- Fully qualified, experienced & welcoming curators.
- SEND specialism teacher.
- Adventurous experiences curated by Adventure Fit SW and their ALA qualified instructor
- We welcome and celebrate neurodiversity.
- Creative Arts sessions run by music coaches, therapists and musical theatre experts.
- Transport from specified pick up points included in prices.
- Full day sessions (8 hrs) inc food eg bbq, fish n chips or pub meal etc
- Friends and siblings are also welcomed.
- Aspirations for All Sessions 1:1 or small group.
- Tutoring qualified PGCE SEND specialism Teacher
- Lego based therapeutic groups - Play for All accredited.
- Drawing and Talking accredited practitioner.

SPARK SEARCHERS
AGE 10-14 YRS
SUNDAYS
10-2 £30 PP



WILD WONDERERS
AGE 15 YRS PLUS
MONDAYS/ SATURDAYS
10-6 £60 PP



**SUPPORTING
EDUCATION
FOR ALL.**



To see current sessions and to book visit:

<https://www.tickettailor.com/events/creativecuriositiessw>

TUESDAY 1ST

10-2 £20 PP /
£50 FAMILY OF 4



Meeting with Trees
Nature walk & music
making.
Family experience,
Unaccompanied
children must be
8+ years.
Neurodiversity
welcomed.

WEDNESDAY 2ND

10-6 £60 PP



Wild Wonderers
15 yrs plus
Adventurous
activity eg
paddleboarding -
details tbc
Neurodiversity
welcomed.

SATURDAY 5TH

10-6 £60 PP



Wild Wonderers
15 yrs plus
Exploration of the
Rame Peninsula
and Musical
Theatre Workshop
Neurodiversity
welcomed.

HOLIDAY EXPERIENCES

MAY/JUNE

All prices include transport from and return to Plymouth or Tavistock
Any queries text or call Rose 07764737620 or email hello@creativecuriosities.org.uk
Scan code to book or go to <https://bit.ly/CreativeCuriositiesSW>



Creative Curiosities South West

Website: www.creativecuriosities.org.uk

Queries: hello@creativecuriosities.org.uk

Telephone: 07764 737620

Bookings for activities:
<https://bit.ly/CreativeCuriositiesSW>



@AccessSport #StayActiveWithAccess #StayInWorkout

For a full list of opportunities, go to www.accesssport.org.uk/inclusive-activities



ACCESSSPORT

Transforming lives through sport

Funded By:



**SPORT
ENGLAND**



SPORTS
ENGLAND

Access Sport have put together lots of inclusive great resources and activities. See their website at: www.accesssport.org.uk/Pages/Category/inclusive-activities

You can also find lots of [online activities](#) where you can join in "live sessions" in real time or do in your own time at home.

[Sign up](#) to their weekly newsletter.

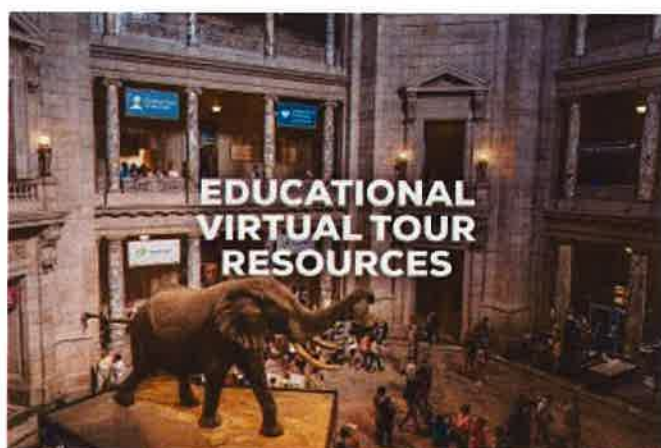
Find them on Facebook: www.facebook.com/AccessSport/

Are you learning or teaching from home or looking for a way for your kids to catch up?

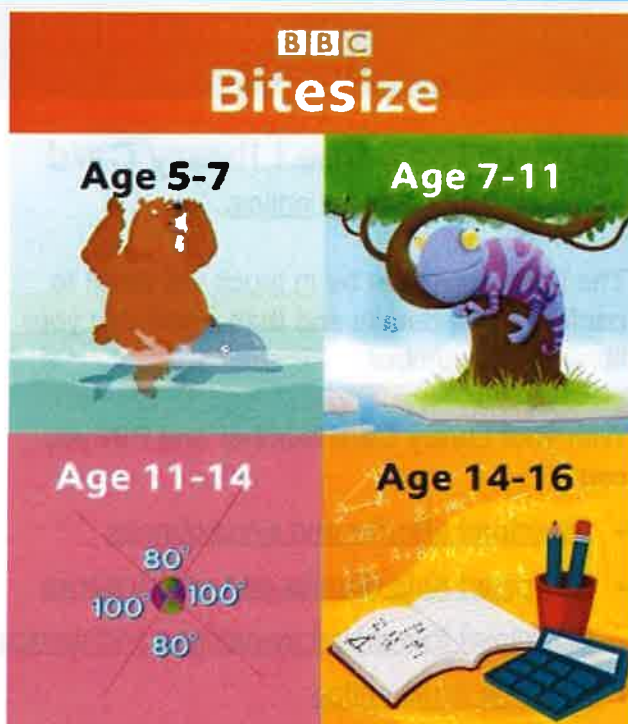
Bitesize is still here to help!

Bitesize have put together lots of resources for years 1 to 9 which can be used as homework, for home-learning or in the classroom.

<https://www.bbc.co.uk/bitesize/articles/zvqgsk7>



[Free Virtual Tours of
World Museums,
Educational Sites
& Galleries for Children](#)



Find local activities with free app Hoop including activities for young people with special educational needs and disabilities.

<https://hoop.co.uk>

Plymouth Libraries & The Box

Plymouth Libraries are open for browsing, borrowing and pre-bookable PC use. Find out opening days and times of each library and information on safety measures when visiting from our website: [Coronavirus \(COVID-19\) Information about Libraries](#)

Regular activities and events are temporarily suspended, but activities are posted on the [Plymouth Library Facebook](#):

- **Storytimes**—Every Monday and Friday at 10am
- **Rhymetimes**—Every Wednesday at 10am



Sign up for a free Library Card

You can join the library [online](#).

The library will then be in touch via email to confirm a few details and then email you your library card number.

With your Library Card Number and PIN you can:

- [Download eBooks and eAudiobooks](#)
- [Download Kids eBooks and eAudiobooks](#)
- [Download free digital magazines and comics](#)
- [Reserve items online](#)
- Use the computers and Wi-Fi in libraries for free
- Use [online resources](#) including dictionaries, encyclopedias, streaming music, newspapers, homework help and more.



The Box

The Box is Plymouth's new heritage centre incorporating a museum, gallery and archive. It also features a café, shop and bar along with an "archive in the sky" with research and learning facilities and a major new public square for gigs, performance, theatre and events.

The Box promises an incredible experience and boasts six outstanding national collections, over two million artefacts, archives, film, photographs, figureheads, the Mayflower and a mammoth!

For more information and to keep up-to-date see The Box website:

<https://www.theboxplymouth.com/>



National Marine Aquarium

Open daily 10am-5pm

Last entry 4pm

Timed entry—tickets must be booked online and a time slot chosen



There are now 3 ticket types **Saver, Standard and Peak** depending on when you visit but regardless of time, the following will always be true:

- All tickets come with a complimentary free year pass to the Aquarium
- Child tickets are always half the price of adult tickets
- Senior tickets are always £2 less than adult tickets
- Student tickets are always £5 less than adult tickets
- If you live in a PL postcode, you can now purchase a **Locals Pass** meaning you'll always pay the **Saver** ticket price.



[Book online](#)



Quiet at the Aquarium

Monday 31 May 2021

Time: 5:30pm-7:30pm

Price: £6.50 per child / £8 per adult /
Carers and under 3s FREE

A special after hours two hour event that allows families and people with autism and / or other sensory needs to enjoy our exhibits without the noise and distractions of our daily shows.

[Book online](#)



Dine at the Aquarium

Select Dates throughout 2021, 7pm-10pm,
dinner served from 7:45pm

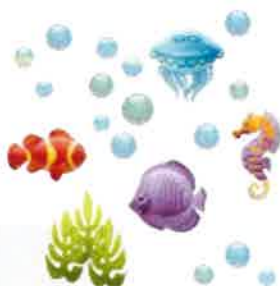
Price: £55 per person (pre-booking, payment and pre-orders required)

An exclusive after hours dining experience in front of our world class exhibits. Dinner will be a stunning à la carte four course menu with a bottle of wine included per table and glass of prosecco on arrival.

Any questions email:

functions@oceanconservationtrust.org

[Book online](#)



National Marine Aquarium,
Rope Walk, Coxside, Plymouth, PL4 0LF

For more details see website:

www.national-aquarium.co.uk

or call 0844 8937938



Activities & Events



You don't need to pre-book your visits and the National Trust are now accepting visitors if they have space on the day. However, at busier times like school holidays and weekends, booking is recommended to guarantee entry.

To avoid disappointment, please **pre-book your timed entry tickets online or by calling 0344 249 1895**. Members can book for free, while non-members will need to pay when booking. Tickets will be released for sale every Friday for the following week. Booking will close at 3pm the day before your visit. Please arrive at properties within your 30-minute timeslot. You're then welcome to stay until closing time.

Saltram

Plympton, Plymouth, PL7 1UH

The Saltram estate is open 10am-5pm daily where you can enjoy the one-mile pillars walk or Saltram boundary walk. Limited indoor seating is now available in the Park Café from 10am-4pm and the Chapel tearoom from 10:30am-4:30pm with a range of hot and cold drinks and food. Toilets and shop are also now open. House remains closed until 7 June. Card payment only. For the latest information and to book see: [Saltram](#)

Saltram Pillars Walk

Take an easy one-mile walk from Saltram House that follows parkland and woodland, providing distant views of the estuary, Plymouth and Cornwall.

Saltram Boundary Walk

This walk follows parkland and woodland, providing views of the estuary and Blaxton saltmarsh.

More Information: Admin Office 01752 333500

saltram@nationaltrust.org.uk



Plymbridge Woods

Plympton PL7 4SR

The Plym Valley consists of varied habitats from riverside meadows, ancient woodland and the wilderness of Dartmoor. Car parks at Plymbridge, Cadover Bridge and Shaugh Prior provide good starting points to explore the area on foot or bike. Booking not required.



Plymbridge Wood Family Cycle Trail

Follow the route of the old Great Western Railway track taking in industrial remains, towering quarry faces and breathtaking viaducts as you travel through glorious woodland before emerging out into open countryside. Start at the Plymbridge Woods car park (grid ref SX523585) for a 10 mile (16km) ride taking approximately 1 hour. See: [Plymbridge Woods Family Cycle Trail](#)

Woodland Wander Walking Trail

Enjoy a dog friendly circular walk alongside the River Plym through ancient woodland. Start at the Plymbridge Woods car park (grid ref SX523585) for a 1 mile (1.6km) walk taking approximately 30-40 minutes. See: [Woodland Wander](#)

Bricks, Boulders & Bronze Walk at Dewerstone Walking Trail

Step back in time on a walk through Dewerstone, the site of many archaeological finds dating date back as far as the Bronze Age. Start at Shaugh Bridge National Trust car park, near Shaugh Prior (grid ref SX533637), Plymouth PL7 5HD for a 3.5 miles (5.6km) walk taking 2-3 hours. See: [Bricks, Boulders & Bronze Walk at Dewerstone](#)

More Information: Admin Office 01752 341377

plymbridgewoods@nationaltrust.org.uk

Buckland Abbey

Yelverton, PL20 6EY

Buckland Abbey estate and gardens are open daily for walks from 10am-5pm. Ox Yard Café is open for takeaway and eat in light lunches and snacks from 10am-4pm. The Abbey (ground and middle floors open with one-way system), Great Barn and shop are open. For the latest information and to book see: [Buckland Abbey](#)

Abbey Walks

Buckland Abbey has three estate walks all starting from the Great Barn and are also suitable for walking dog walking (please keep on lead). There's a walk for everyone with an easy, medium and hard route. The Yellow walk is a buggy and wheelchair friendly 15-20 minute walk taking you over the fields with an excellent view of the valley and Cistercian buildings.

More Information: Admin Office 01822 853607

bucklandabbey@nationaltrust.org.uk

Antony

Torpoint, PL11 2QA

The house (ground floor only) and garden at Antony are open. Please check the [opening times calendar](#) as this venue is not open every day. You will need to book your visit in advance. For more information see: [Antony](#)

Wildlife Adventures in Nature Trail

Date: Until Sunday 6 June 2021 (whilst stocks last), 12noon-5pm (last entry at 4pm)

Price: £3 per trail, (normal admission charges apply)

Discover your local family-friendly trail at Antony with fun activities to do along the way. Find the ten trail stops around the garden on your quest to claim your chocolate reward. Use your imagination, take on some physical challenges and connect with nature to get to the finish line. Complete the trail and earn your chocolate reward or allergen free prize at the end.

More Information: Admin Office 01752 812191

antony@nationaltrust.org.uk

Lydford Gorge

Lydford, EX20 4BH

Lydford Gorge is the deepest river gorge in the South West. The circular walking trail to the spectacular 30 metre Whitelady Waterfall is open daily from 10am-5pm. The Waterfall tea room is open for takeaway from 10.30am-4.30pm. To ensure the safety of visitors, the full Lydford Gorge walking trail, Devi's Cauldron walking trail, shop and Devil's Cauldron tea-room are currently still closed. Please book your visit online in advance by 3pm the day before you wish to visit. For the latest information see: [Lydford Gorge](#)

Lydford Gorge Waterfall Trail

Head into Lydford Gorge to find the Whitelady Waterfall that has been drawing visitors since Victorian times. Take the scenic route back up through semi-ancient oak woodland and along the route of the old Great Western Railway. Start at Lydford Gorge Waterfall car park (grid ref SX501831) for a dog friendly 1 mile (1.6km) walk, taking approximately 1 hour.

More Information: Admin Office 01822 820320

lydfordgorge@nationaltrust.org.uk



Cotehele

St Dominick near Saltash, PL12 6TA



Cotehele garden, quay and estate are open daily from 10am-5pm to access walks. Cotehele House (Great Hall and breakfast room only) and Cotehele Mill are also now open. The Barn restaurant located in the garden at Cotehele is open daily from 10am-5pm serving a limited takeaway menu of hot and cold drinks and light snacks. Card payment only. If you are visiting the gardens and orchard, you are advised to book to avoid disappointment. For visiting the quay or wider estate, booking is not required. For the latest information and to book, see: [Cotehele](#)

Cotehele's Dog Walking

With lots of paths through the woodland, countryside and around the quay, there were lots of walks you can take your dog on. There are 4 dog waste bins on the estate. Download the [Walkies: Dogs at Cotehele Guide](#)

Cotehele Quay

Visit the historic Cotehele Quay on the banks of the River Tamar where goods were once shipped to and from Plymouth. Built in Plymouth in 1899, you can also see 'Shamrock', the only fully-restored Victorian ketch-rigged sailing barge in the world. Parking: The pay and display car park on the quay is open from dawn to dusk. National Trust members can park for free by scanning their membership card at the parking machine.

More Information: Admin Office 01579 351346 press 0

cotehele@nationaltrust.org.uk



**National
Trust**

For more events and places to visit see

[The National Trust](#) website.

www.nationaltrust.org.uk

May - June 2021

Join us for free community events
& wildlife volunteering - everyone welcome!



Central Park

Plymouth



May - June 2021

Join us for free community events
& wildlife volunteering - everyone welcome!



Get involved at Central Park!

From wildlife monitoring to using technology to reveal nature in the park, there are many ways for everyone to get involved at Central Park!

To find the meeting locations for each event, scan the QR code or visit:

www.plymouth.gov.uk/parksnatureandgreenspaces/findpark/centralpark

We recommend checking greenmindsplymouth.com/events for event updates.



May

Saturday 29th May, Take Action for Wildlife hedge surveying:

Session 1: 9:30am - 12pm

Session 2: 1pm - 3:30pm

Discover the plants & wildlife living in Central Park's hedgerows & how these can be better for wildlife in the future!

Booking essential - go to greenmindsplymouth.com/events to book your space on session 1 or 2 & receive event details.

Saturday 29th May, 1pm - 3pm:

Find out more about Central Park Treescapes Project & free self-led family nature activities!

No booking required: drop-in at Zoo Field.

June

Friday 4th June, 3pm - 5pm:

Living Nature Lab - find out how digital technology is revealing nature in the park!

More details coming soon on greenmindsplymouth.com/events.

Wednesday 23rd June, 9:30am - 2:30pm:

Take Action for Wildlife plant surveying at Central Park

Booking essential - go to greenmindsplymouth.com/events to book your space & receive event details.

Saturday 26th June, 1pm - 3pm:

Find out more about Central Park Treescapes Project & free self-led family nature activities!

No booking required: drop-in at Pounds Park.

Find out more

For more event details & updates, scan the QR code or visit www.greenmindsplymouth.com/events. To find out more about Green Minds events at Central Park, email us at wildlife@plymouth.gov.uk or message us on Facebook [@NaturePlymouth](https://www.facebook.com/NaturePlymouth).

[@CentralParkPlymouth](https://www.facebook.com/CentralParkPlymouth)



On your
smartphone?
Scan the QR code.



www.greenmindsplymouth.com



[@NaturePlymouth](https://www.facebook.com/NaturePlymouth)



[@GreenMindsPlym](https://twitter.com/GreenMindsPlym)

[#GreenMindsPlymouth](https://www.instagram.com/GreenMindsPlymouth)



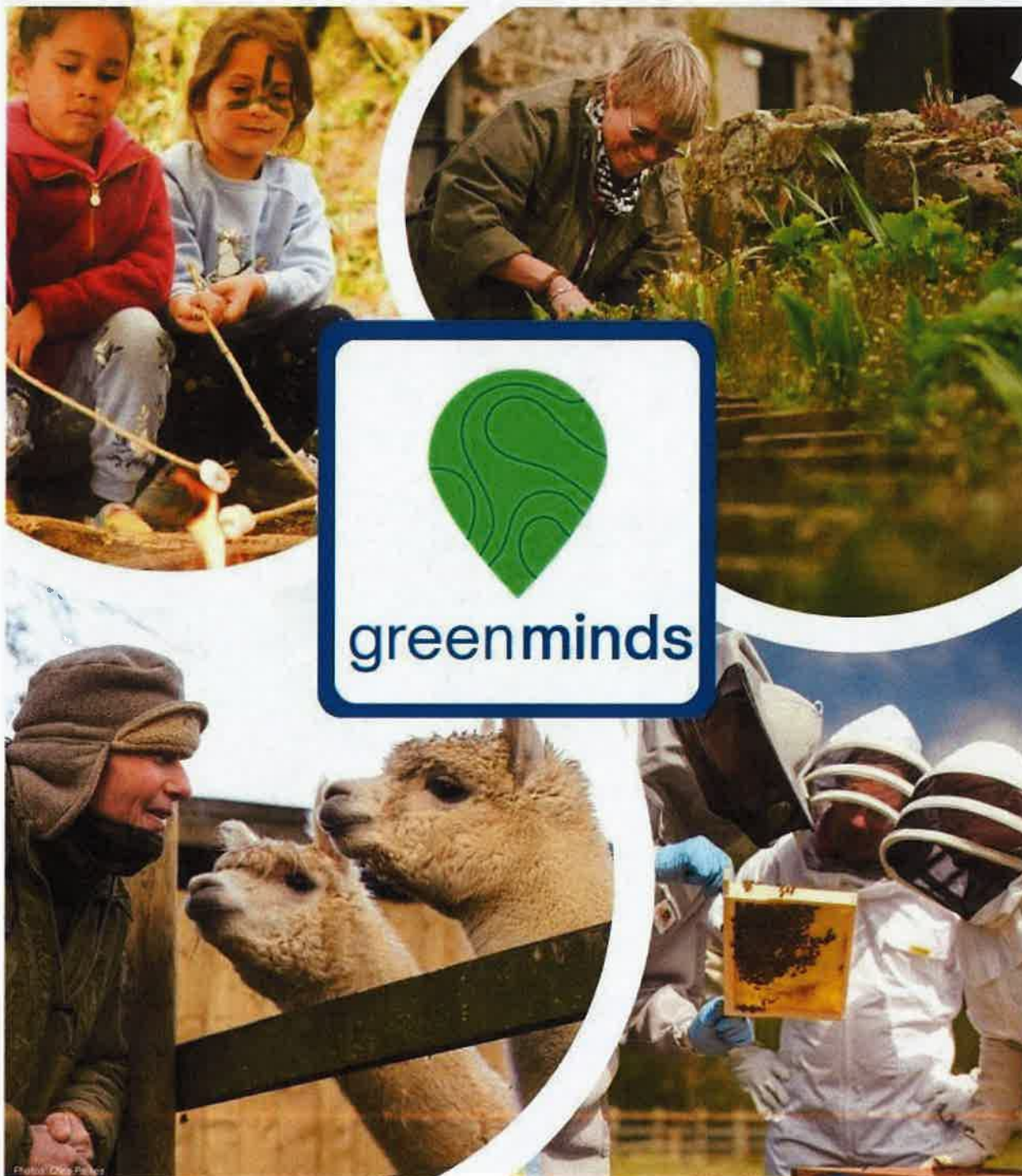
May - June 2021

Join us for free community events
& wildlife volunteering - everyone welcome!



Derriford Community Park

Poole Farm Plymouth



May - June 2021

Join us for free community events
& wildlife volunteering - everyone welcome!



Get involved at Derriford Community Park!

Poole Farm Plymouth

Volunteering

Get stuck in with practical conservation, gardening, citizen science & animal activities at Poole Farm in the heart of Derriford Community Park!

Hands-on volunteer sessions are run every Tuesday, Wednesday & Thursday.

There are also opportunities to assist with educational sessions and family events.

Would you like to join the volunteer team?

Scan the QR code with your smartphone or visit the
Poole Farm website to find out more:

www.plymouth.gov.uk/poolefarm/volunteeringpoolefarm



If you're looking to volunteer as a group or have a team away day, please email the Poole Farm team at derrifordcp@plymouth.gov.uk with your enquiry.

Family events

During the school holidays, the Poole Farm team run bookable **free** family events.
Booking essential - go to www.greenmindsplymouth.com/events to book your space
& receive event details for May/June half-term family fun on:



Tuesday 1st June, 11am - 2pm

&

Thursday 3rd June, 11am - 2pm



Our friends at Flint & Steel also run chargeable forest school sessions at Poole Farm during the school holidays - to find out more, visit www.flintandsteelforestschoo.co.uk

Find out more

- For more event details & updates on Green Minds events, scan the QR code or visit www.greenmindsplymouth.com/events.
- To discover more ways to get involved at Poole Farm, visit www.plymouth.gov.uk/poolefarm.
- For any enquiries, email derrifordcp@plymouth.gov.uk or call the Poole Farm team on 07500 075719.

@PooleFarmPlymouth



On your
smartphone?
Scan the QR code



www.greenmindsplymouth.com



@NaturePlymouth



@GreenMindsPlym

#GreenMindsPlymouth



REAL
IDEAS



PLYMOUTH
COLLEGE
of ART

Devon
Wildlife Trust



UNIVERSITY OF
PLYMOUTH



May - June 2021

Join us for free community events
& wildlife volunteering - everyone welcome!



Take Action for Wildlife

Plymouth



Photos supplied & nature sighted Chris Pearce
Photos supplied by Plymouth Environmental Action



May - June 2021

Join us for free community events
& wildlife volunteering - everyone welcome!



Take Action for Wildlife

Plymouth

Join Devon Wildlife Trust's Urban Ranger, Nick Purdew & Devon Biodiversity Records Centre's (DBRC) Community Ecologist, Jess Smallcombe, for a programme of free practical conservation, citizen science & ecological training events around Plymouth.

We recommend checking greenmindsplymouth.com/events for updates on event details.

May

Saturday 29th May, Hedge surveying at Central Park:

Session 1: 9:30am - 12pm

Session 2: 1pm - 3:30pm

Discover the plants & wildlife living in Central Park's hedgerows & how these can be better for wildlife in the future!

Booking essential - go to greenmindsplymouth.com/events to book your space on session 1 or 2 & receive event details.

June

Wednesday 16th June, 6pm - 7pm:

Plant surveying for long-term monitoring webinar

Find out why we're monitoring the plants of Central Park & how you can help!
Go to greenmindsplymouth.com/events to book your space on this online event.

Wednesday 23rd June, 9:30am - 2:30pm:

Plant surveying at Central Park

Help us discover the plants present in Central Park! Due to limited spaces on this event, we recommend attending our plant surveying webinar on 16th June to find out more.

Booking essential - go to greenmindsplymouth.com/events to book your space & receive event details.

Find out more

For more event details & updates, scan the QR code or visit
www.greenmindsplymouth.com/events

If you have any questions about Take Action for Wildlife, email Nick at npurdew@devonwildlifetrust.org or call 07376 029545.



On your
smartphone?
Scan the QR code



www.greenmindsplymouth.com



@NaturePlymouth



@GreenMindsPlym

#GreenMindsPlymouth



REAL
IDEAS



PLYMOUTH
COLLEGE
of ART

Devon
Wildlife Trust



UNIVERSITY OF
PLYMOUTH

EUROPEAN UNION
European Regional Development Fund



There are lots of exciting things to discover...

- Interactive Discovery Centre
- Easy access wildlife trail in the Arboretum
- Artistic impressions at three of our important ruins: Lowery Barn, Leatherfor Farm and Longstone Manor
- Weekly Forest Fun sessions for parents and toddlers
- Burrator Outdoor Pre-School
- Curriculum-based school trips
- Informal learning programmes for all ages, combining Forest School with wider outdoor learning, from one-off taster days to progressive programmes
- Work experience / university placements
- Team building days
- A wide range of volunteering opportunities, including practical conservation work, archaeological preservation projects, gardening, woodwork, environmental education, historical research, wildlife surveys, walk leaders, event organisers and visitor centre guides
- Monthly Family Wildlife Watch sessions
- Public events
- Rural skills training days

After you have explored Burrator, why not pick up one of our self-guided themed walk leaflets and discover more....

For more information call 01822 855700 or email heritage@swlakestrust.org.uk



Commemorative medal
Donated by a volunteer



Burrator Reservoir

The reservoir and its surrounding area are owned by South West Water and managed by South West Lakes Trust. This special place lies within Dartmoor National Park.

Burrator Reservoir fills with water from Dartmoor which is then piped to three water treatment works serving around 280,000 people in Plymouth, Tavistock, Princetown and South Devon.

South West Lakes Trust

South West Lakes Trust is the region's largest combined environmental and recreational charity, managing inland waters on behalf of South West Water for conservation and recreation purposes.

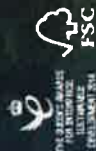
The Trust aims to protect and preserve the natural environment (natural and historical) for the public, provide educational opportunities and promote public access and sustainable recreation. We aim to provide a balance between the lakes' primary purpose as a water supply and safe access and enjoyment of these beautiful places for the public.

Burrator Discovery Centre, Yedverton, Devon PL20 6PE
Tel: 01822 855700 Grid Reference SX 552 685



www.swlakestrust.org.uk

Registered charity 1070066



Project kindly supported by:



Welcome to Burrator Reservoir

'I've been coming to Burrator for many years. On visiting the centre I didn't realise how rich the heritage of the area was and have learnt about new places to explore!'



www.swlakestrust.org.uk

Come and explore Burrator Reservoir and the surrounding area

- Please allow 2 hours to complete the 3.5 mile (5.6km) walk around the reservoir.
- Easy access trails can be found along the old railway track (now the cycle route), the nature trail at the Arboretum or using the tracks around the peninsula of Longstone Manor.



Fishing at Burrator
Fly fishing from the bank for stocked Rainbow and Blue Trout and 'catch and release' for Brown Trout. Permits can be purchased from our self-service fishing permit kiosk. A wheelchair is also available.



Circular Reservoir Walk
Enjoy lovely views as you follow the path around the edge of the reservoir. Ideal for families. For other walks pick up leaflets from the Discovery Centre. What is the weather like today?



Burrator Discovery Centre
Find out more about Burrator's rich history at the Discovery Centre, which includes displays, spoken history and an interactive screen.



Old Railway Laps
In 1823 the Plymouth and Dartmoor Railway was a horse drawn line. In 1893 it was upgraded to a standard gauge railway to enable the use of steam locomotives. Can you work out where the platform would have been?



Burrator Quarry
A site of special scientific interest (SSSI) showing the contact between Dartmoor Granite and Devonian Country Rock (slate).



Lowery Barn
Explore the ruins of Lowery Barn and the surrounding 'barntons'. How old is the barn? How many can you find the date stone?

Leather Tor
370 m/1214 ft

Down Tor
366 m/1201 ft



Burrator Arboretum and Nature Reserve
The park was restored in 2014 to create an easy access footpath to give everyone the opportunity to escape the road and enjoy a truly sensory experience. How many different birds can you see and hear?



Longstone Manor
Stand over to the Manor. Imagine what it was like when the Manor was in use. Can you find the brooding platform nearby?

Sheepstor
360 m/1210 ft



Burrator and Sheepstor Dams
Explore the differences - 60,000 tonnes of granite with concrete, compared to a sloping earth dam with a waterproof clay core.

- Information**
- Site
 - Bus stop
 - Building
 - Rocks
 - Road
 - Formal car parks
 - Informal car parks
 - Reservoir walk (Please keep your dogs on a lead)
 - Path
 - Cycle path
 - Leat
 - Stream
 - Disused railway
 - Fishing permit kiosk

0.5 km
0.5 mile

- Thank you for respecting this beautiful place and following the reservoir regulations and the countryside code.
- No fire or BBQs
 - No camping
 - No swimming
 - No boats
 - Dogs must be kept out of the water at all times
 - Please keep your dogs on a lead at all times whilst on the reservoir walk and between 1 March and 31 July when crossing open access land due to lambing and bird nesting season
 - Do not leave litter or dog poo bags
 - No removal of trees or plants
 - Fishing permit and EA licence required
 - Keep well clear of anglers casting
 - Please close gates

What's On

The Gingerbread Man

Date: Sat 29—Mon 31 May 2021, 11am / 2:30pm

Venue: The Drum (Socially Distanced)

Age: Suitable 3+ (no scary bits)

Tickets: £13 / £10 Concessions

Running Time: 1 hour

Come and see the adventure of the deliciously smelling Gingerbread Man who finds his feet fast and sets off on the journey of a lifetime! **Stuff and Nonsense Theatre Company** apply their usual brilliance with a mix of puppetry, live-action, great music, humour, and a stunning staging in this exciting and pacey retelling of this well-loved classic tale.



The Three Muskateers

Date: Wed 9—Thurs 10 Jun 2021, 7:30pm

Venue: The Lyric (Socially Distanced)

Age: TBC

Tickets: From £18

Running Time: TBC

Armed with only a baguette and his questionable steed join hot-headed d'Artagnan as he travels to Paris to become a musketeer. Will things go to plan? It's unlikely! Featuring hilarious heroics, raucous romances and some bonkers fun with BMX bikes, **Le Navet Bete** and **Exeter Northcott Theatre** condense Dumas' 700-page classic into two hours of non-stop comedy gold.



[See What's On](#)

Call the Box Office on **01752 267222**

Treasure Island

Date: Fri 11—Sat 12 Jun 2021, 7:30pm

Venue: The Lyric (Socially Distanced)

Age: Suitable 7+

Tickets: From £18

Running Time: 2 Hours 20 mins (approx)

Join **Le Navet Bete** and the **Barbican Theatre** for a swashbuckling family comedy. Featuring swashbuckling pirates, tropical islands and a mermaid you will never forget, set sail on the Jolly Todger with Jim Lad, Long John Silver and a whole host of other characters as they make their way to the Caribbean to seek out a bounty of illusive treasure.



Hairspray

Date: Thurs 24 Jun—Sat 3 Jul 2021,

Venue: The Lyric (Socially Distanced)

Tickets: From £32

Running Time: TBC

The **West End and Broadway** smash-hit musical comedy **Hairspray** is returning to Plymouth with a production guaranteed to have you dancing the night away! Starring **Brenda Edwards** as Motormouth Maybelle and **Norman Pace** as Wilbur Turnblad.



Moor Otters Trail

Be an Otter Spotter this Summer

The Moor otters arts trail will be coming to Dartmoor on Friday 28th May 2021.

81 stunning sculptures of otters with cubs, all designed by local and national artists will be released on different trails in Plymouth, Dartmoor and gateway towns and villages.

Start planning your adventures on the [Trail Map](#).

Join our Facebook group [Moor Otters Arts Trail](#) or follow us on [Twitter](#) for updates.

Find out more at:

<https://www.dartmoor.gov.uk/enjoy-dartmoor/moor-otters/moor-otters-trails>



Interactive Plymouth Trails App

Download the FREE interactive Plymouth trails app and explore the city's fascinating past. This brand new app features self-guided walking trails throughout Plymouth and gives visitors and locals alike the chance to explore the city through new eyes and discover more about its complex history.

The app includes three new tailored trails: **Mayflower Trail**, **City Centre Trail** and **Plymouth Hoe Trail**. It also hosts free partner trails including the **American Trail** and the **Sutton Harbour Heritage Trail**. Other trails will be added in the future.

The app is available to download on Android or iOS. The app and core trails are available in English, French, Spanish and German.

[Find out more](#)



Explore the Nature Trail in Ham Woods

The Friends of Ham Woods have been busy creating a nature trail across the site for you and your families to follow during the summer months.

There are 15 wooden discs to find across the woods which will be hidden in the trees, each with a different animal depicted on it. Information about each animal will be posted to their [Facebook Page](#).



For more information on parks and greenspace in Plymouth contact wildlife@plymouth.gov.uk



School Holiday Sessions for Secondary School ages (11-15)

We're excited to share our range of new half day adventures and courses available for those aged 11+.

	Price	Session Dates
Kayak Half Day Adventure	£29.50 per person or £55 for two people from the same household or support bubble.	Tuesday 1st June: 13:00 - 16:00 Wednesday 2nd June: 13:00 - 16:00 Thursday 3rd June: 09:00 - 12:00 Friday 4th June: 09:00 - 12:00 Tuesday 3rd August: 09:00 - 12:00 Thursday 5th August: 09:00 - 12:00 Monday 16th August: 13:00 - 16:00 Friday 20th August: 09:00 - 12:00 Tuesday 24th August: 13:00 - 16:00 Thursday 26th August: 13:00 - 16:00 Monday 30th August: 09:00 - 12:00 Wed 1st September: 09:00 - 12:00 Friday 3rd September: 09:00 - 12:00
Stand-Up Paddleboarding Half Day Adventure	£29.50 per person or £55 for two people from the same household or support bubble.	Tuesday 1st June: 09:00 - 12:00 Wednesday 2nd June: 09:00 - 12:00 Thursday 3rd June: 13:00 - 16:00 Friday 4th June: 13:00 - 16:00 Tuesday 3rd August: 13:00 - 16:00 Thursday 5th August: 13:00 - 16:00 Monday 16th August: 09:00 - 12:00 Wednesday 18th August: 13:00 - 16:00 Friday 20th August: 13:00 - 16:00 Tuesday 24th August: 09:00 - 12:00 Thursday 26th August: 09:00 - 12:00 Monday 30th August: 13:00 - 16:00 Wed 1st September: 13:00 - 16:00 Friday 3rd September: 13:00 - 16:00
Royal Yachting Association Stage 1 and 2 course	£559.95 per pair	Monday 31st May until Friday 4th June 2021 (5 day course) 09:00 – 16:30 each day

For more information and to book see:
[School Holiday Sessions for Secondary School ages \(11-15\)](#)



mountbatten

watersports & activities centre

School Holiday Sessions for 8 to 12 year olds

We are working on plans for May Half Term and Summer school holidays for activities for the 8+ age group.

For further updates see:

[School Holiday Sessions for 8 to 12 year olds](#)



Fit and Fed

Plymouth City Council Sports Development unit have secured funding from the Department of Education to deliver a 'Fit and Fed' programme in 2021.

The Centre will release further details and booking links for activities available in August 2021 as soon as further details are confirmed.



See the following page for updates:

[August 2021 Fit and Fed Programme](#)

**Mount Batten Watersports & Activities Centre, 70 Lawrence Road,
Mount Batten, Plymouth, PL9 9SJ**

T: 01752 404567 E: enquiries@mount-batten-centre.com

www.mount-batten-centre.com

www.facebook.com/MountBattenWatersports

Bikeability Holiday Courses

Bikeability is today's cycle training programme. It's like cycling proficiency, but better! It's about gaining practical skills and understanding how to cycle on today's roads.



Bikeability Balance

These courses are currently only available to schools. For children age 3 to 6 years, in groups of up to 5 per instructor. A fun activity for beginners that helps them learn to balance on a bicycle and builds confidence.

Learn to Ride

For children age 7 and above, in groups of up to 3 per instructor. Designed for children who are unable to ride a cycle, teaching the skills necessary to get them cycling with confidence.

Level 1

For children in Year 3 or 4, in groups of up to 12 per instructor. For children who are able to ride a cycle (without stabilisers), teaches basic cycle control skills in a traffic free environment building their confidence ahead of on-the-road training.

Level 2

For children in Year 5 or above, in groups of up to 6 per instructor. Teaches children how to deal with traffic on short journeys, a real cycling experience on quiet roads.

Level 3

For children who have completed Level 2 and are in Year 7 or above, in groups of up to 3 per instructor. Advanced on road cycling, busier streets, queuing traffic and complex junctions and roundabouts.

All instruction is undertaken by National Standard Qualified Instructors, all of whom have undertaken satisfactory Disclosure and Barring Service (DBS) checks, safeguarding training and have appropriate first aid qualifications.

For more information about Bikeability, please visit <https://bikeability.org.uk>



Whitsun Half Term 2021

Type of Course	Venue	Date and Time	Spaces	Cost	To book a place, please visit...
Level 2	Victoria Park, Plymouth PL1 5NJ	1st – 4th June 2021 10am to 12pm	6	FREE* £45 REFUNDABLE DEPOSIT REQUIRED	https://cyclepssp.co.uk/Course/bikeability-level-2
Level 2	Victoria Park, Plymouth PL1 5NJ	1st – 4th June 2021 1pm – 3pm	6	FREE* £45 REFUNDABLE DEPOSIT REQUIRED	https://cyclepssp.co.uk/Course/bikeability-level-2
Level 2	Tavistock College PL19 8DD	2nd – 3rd June 2021 10am – 3pm	6	FREE* £45 REFUNDABLE DEPOSIT REQUIRED	https://cyclepssp.co.uk/Course/bikeability-level-2
Level 3	Tavistock College PL19 8DD	4th June 2021 9am – 3pm	3	FREE* £45 REFUNDABLE DEPOSIT REQUIRED	https://cyclepssp.co.uk/Course/bikeability-level-3

** To secure a place on a course, we take a refundable deposit at the point of booking.
The deposit is refundable **only** on completion of the course.*

*For more information, please read the Terms & Conditions in the booking window on our website.**

After your child's course, please take a few minutes to look at the Bikeability Parents Handbook; <https://bit.ly/3b24HER>

It's been designed so you understand what your child has learnt and to give you the confidence to go cycling with them on roads and cycleways.

Do you want to be the first to know about new courses?

Send an email to psspadmin@sjhcsc.co.uk to join our emailing list, with the subject heading "Add to Bikeability E-Mailing List"

Why not follow us on social media too?



@PSSPCycleTraining



@CyclePSSP

William Sutton Hubs Plymouth

Volunteering Opportunities

.....

Are you Interested in doing some Volunteering ?

Would you like to gain new skills and experience ?

Do you have some spare time, either regularly or occasionally ?

Would you like to meet people and develop your
confidence ?

If the answer is 'yes' to any of the above, then we would love to hear from
you !

We have a variety of volunteering opportunities available including.....



Helping In Our
Community Cafes



IT Support Volunteers



Community Garden Steering Group &
Gardening Volunteers



Administration Support



Craft Group Support



'Handy' Person/s



Marketing, Social Media,
Events & Distribution Support

.....And More !!

You will receive full training and support for all roles and you will be joining
the Hubs at an exciting time when there are lots of new things starting up !

To find out more or to register your interest, please contact our

Volunteer Coordinator Penny Logsdail 07851645584 or

email plogsdail@colebrooksw.org

We look forward to hearing from you !



Preparing for Adulthood—Parent Group Sign-up

In partnership with other agencies, including Education, Social Care and Health providers; the parent group runs regularly to provide opportunities for networking, information, advice and support for parents and young people.

Preparing for Adulthood is just that, and we hope to be able to share the right information at the right time to enable students to transition into adult services, with everything they need to continue their journey.

If you would like to hear more information regarding the next meeting, please sign-up below, and we will be in touch.

[Parent Group Sign-up](#)

aD.A.Pt

(Derriford Autism Partnership)

ARE LOOKING FOR NEW MEMBERS

Are you on the **Autism Spectrum** or have a **particular interest in Autism**?

If so would you be interested in meeting monthly, to support the **Derriford Autism Service** in improving the care of people with Autism in the hospital?

We aim to enable the hospital staff to **adjust to individual needs**, and therefore **promote positive health care outcomes**

For further information you can contact:

Kate Bamforth

Autism Lead Nurse

TEL: 01752 432134

EMAIL: plh-tr.derrifordautismservice@nhs.net

<https://www.plymouthhospitals.nhs.uk/autism-service>

Head Space

ANNOUNCEMENT 1ST AUGUST 2020
EXTENDED HOURS
6pm - MIDNIGHT

Peer 2 Peer Mental Health Support

Here for you when times get rough

A safe, calm place where you can find support

Due to COVID-19, Head Space is running a telephone service only

OUR SERVICE WILL NOW RUN 6pm - MIDNIGHT 7 DAYS A WEEK

Please book an appointment via one of the below:

Call between 6pm-midnight: 07890 257614

Text: 07890 257614

Facebook: [facebook.com/HeadSpacePlymouth](https://www.facebook.com/HeadSpacePlymouth)

Email: headspace@colebrooksw.org

PLEASE BEAR WITH US AS LINES MAY BE BUSY
Thank you

Find us on [Facebook](#) [Instagram](#) [Twitter](#) #YourHeadSpace





Here to help

Action for Children

Have a question about parenting?

Action for Children is offering free online parenting support for families with children aged 0-19. You can ask us for help on all sorts of things – from how to keep your children entertained at home, to how to handle difficult behaviour, to how to manage stress and anxiety at this challenging time.

Head to parents.actionforchildren.org.uk to read our advice and useful resources, or talk directly to a parenting coach via our confidential 1-1 live chat.

Whatever you need, Action for Children are here to listen and support you.

Registered charity no. 1037540/SC018092 Company no. 4764232 © Action for Children 2020 1438

Find useful resources from Action for Children at:
<https://parents.actionforchildren.org.uk/>

Activities and Events for SEND is produced for each school holiday by:

Plymouth Information, Advice and Support for SEND

Jan Cutting Healthy Living Centre
 Scott Business Park
 Beacon Park Road
 Plymouth
 PL2 2PQ

Telephone: 01752 258933
 Freephone: 0800 953 1131
www.plymouthias.org.uk



www.facebook.com/plymouthias

If you would like to be added to our mailing list to receive notification when the next issue is published, please email:
suzanne.davey@plymouth.gov.uk



SCAN ME



The Dangerous Dads network supports fathers' groups across the UK and internationally. It offers a range of fun, low-cost activities all year round for fathers / male carers.

Activities offer opportunities for children aged 10 and under to play together, to explore the local environment, to meet others and to learn some new skills.

All dad's, grandad's and male carers are welcome.

Join Dangerous Dad's [Dadventures](#) Facebook group to see what's going on in Plymouth.



Conversation Cafés

Tuesday 25th May 2021, 7pm-8pm
The Barn, Kit Hill, Plymouth PL5 1EJ or online

Calling all dads and male carers (step-dads, uncles, grandads etc)... meet other dads, make new friends and discuss the challenges and successes of being dad at our Conversation Cafés.

Where? Online... join us from the comfort of your own home or if you're in Plymouth join us in person at The Barn (including free pizza!)

COVID secure.

Please book your FREE place by emailing:
bookings@dangerousdads.org.uk



20th – 22nd August 2021

DadFest Cornwall

DadFest Cornwall is a small festival with a focus on fun, outdoor activities that dads and male carers can do with their children.

It's a chance for children to play with other children, and for fathers to meet other fathers, and for dads and children to spend some quality time together.

- BOOK TICKETS HERE -

For further details click [here](#)

Further questions contact:

bookings@dangerousdads.org.uk





Supportive Zoom group for Mums of children with additional needs (Devon & Cornwall)

Date: Various start dates

Price: Free—**Duration** 2 hours

Public: Anyone on or off Facebook

Booking essential—priority if on benefits. To find out next availability, please contact us via our Facebook page at: <https://www.facebook.com/mums4achange> or email jo@mums4achange.org

Run by Jo Ball, Life and Career coach, trainer, mum of 2 with an Arts Therapy background. Supported by Clare Gale a trained counsellor who has a son with complex medical needs.

Funded by the People's Heath Trust with money from the National Lottery South West.

My Time Parent/Carer Support Sessions

Our regular online parent/carers sessions give you the opportunity to chat, share experiences, have fun and most importantly relax and concentrate on YOU.

Time: Fortnightly Thursday's, 20:00-21:00

Price: FREE, Online event

If you would like more information, or to join the sessions, please get in touch with Nicky.

Tel: 01752 204369

Email; nicky@friendsandfamilies.org.uk

See Facebook: <https://www.facebook.com/events/232088921826215/>





Inclusive activities are offered at YMCA Plymouth centres in Honicknowle Lane and Torpoint. For details about the sessions and suitability, or to discuss a young person's needs, please [contact us](#)

Fun Days @ YMCA Plymouth	Inclusive activities are Fun Days for the whole family geared towards those with additional needs. Activities include: Trampoline, Climbing, Laser Shooting, table tennis, badminton, Bouncy Castle and more!	Cost: FREE Time: 11am-12:30pm Subject to availability - Please contact us Age: All ages
Fun Days @ YMCA Torpoint	Fun Days at Torpoint are for the whole family and geared towards those with additional needs. Activities include: trampoline, table tennis, robot table tennis, badminton, football, basketball, unihock, short tennis, bouncy castle and 6 weekly excursions to local destinations (swimming, Adrenaline and other theme parks).	Cost: £3 per session When: Every other Saturday, 10:30am-12pm Age: All ages
YMCA Specials	This is a multi-sport sessions full of inclusive sports. This club helps build confidence and ability in a fun and friendly environment. Opportunities for competition are also available for those with intellectual disabilities through Special Olympics.	Cost: £3 per session First session FREE! Time: Wednesday 4:45pm-5:45pm Term-time only Ages: 5-16
Special Olympics 'The Specials Club'	A multi-sport club open to people with an intellectual (Learning) disability age 16+. Run by Special Olympics Plymouth & District sports include: Boccia, badminton, short map bowls, football, tag rugby, kwik cricket, judi, basketball and much more! Find out more at: www.sopd.org.uk	Cost: £3 per session First session FREE! Time: Wednesday, 6pm-8pm Age: 16+
Fun Bounce	Trampoline based sessions for children and young people with mobility related disabilities and other additional needs. Sessions help improve strength and mobility while being supported by a qualified instructor.	Cost: £3 per session Time: Thursday, 4:30pm-5:30pm Age: 5-18
Trampolining	A more advanced and structured version of the Fun Bounce sessions. Sessions are for young people who want to progress and develop their trampolining ability.	Cost: £3 per session Time: Thursday, 5:30pm-6:30pm Age: 8-18
Indoor Climbing	Inclusive climbing sessions aiming to make climbing available to people with a wide range of ability delivered by qualified instructors using specialised equipment.	Cost: £3 per session Time: Tuesday, 5pm-6pm Age: 8-18

For further information please call **01752 201918**
YMCA PLYMOUTH, Honicknowle Lane, Plymouth PL5 3NG
www.ymcaplymouth.org.uk/

EMOTIONAL WELLBEING AND MENTAL HEALTH

Key services for children, young people and families to contact in PLYMOUTH



CAMHS

FOR: CHILDREN AND YOUNG PEOPLE UNDER THE AGE OF 18 / PARENTS / CARERS

All children and young people struggling with their mental health can call the helpline for advice and support.

Parents, carers and families or professionals with concerns about a young person's mental health can also call the number.

24 hours a day, every day including over the weekend

HELPLINE CONTACT: 01752 435122



KOOTH

FOR: SECONDARY SCHOOL AGE YOUNG PEOPLE

Free, safe and anonymous online support for young people.

Monday to Friday 12pm to 10pm

Saturday to Sunday 6pm to 10pm

CONTACT:

www.kooth.com/index.php

or search for Kooth on a search engine

(this service provides web based information and advice along with chat based conversations and forums)

YOUNG DEVON

FOR: SECONDARY SCHOOL AGE YOUNG PEOPLE

Someone to talk to for young people concerned about their mental health or emotional wellbeing.

Available remotely through video calls, phone calls, messaging or email at flexible times to suit young people.

- ◆ Wellbeing – confidential and safe conversation with one of our Team to share any concerns you may have and consider further support

- ◆ Counselling – receive counselling support
- ◆ Wellbeing café – where a group can share issues, concerns and develop coping skills /strategies helped by one of our Team

CONTACT:

Call: 08082 810 155
(Monday to Friday 9am to 5pm)

Email: wellbeingenquiries@youngdevon.org

Website: www.youngdevon.org



Key websites

POD	www.plymouthonlinedirectory.com (includes SEND local offer)
Young Devon	www.youngdevon.org/coronavirus-resource-hub-covid19-wellbeing-toolkit
Kooth	www.kooth.com/index.php
Progeny*	www.thezoneplymouth.co.uk/our-projects/mental-health-and-emotional-wellbeing/progeny

*Progeny is a whole school approach to supporting emotional health and wellbeing across school communities by working with schools and key partners.

Activities Online



**Helping you
enjoy storytime
from home**

#BookTrustHomeTime



HomeTime for children aged 5 and under

Fun stories and activities to keep you and your child entertained when you're at home:

<https://www.booktrust.org.uk/books-and-reading/have-some-fun/hometime-for-your-child/>



Free fun activities!

You can find lots of free and exciting activities inspired by the wonderful characters in David Walliams' books. Download the free activity sheets for hours of fun and learning at home.

See: [The World of David Walliams Activities](#)

Whizz-Kidz have some really exciting online activities running for young wheelchair users aged 8-25 via zoom. We offer fun activities like disco's, crafts, baking, coffee mornings and so much more. We are also running Employability Days and Employability hubs.

**Whizz
-kidz**

All services are free of charge. The young person or their parents will just need to fill out a form.

If you would like to find out more information, please contact Ria Dummelow on **07867 124901** or email: r.dummelow@whizz-kidz.org.uk

See Website: <http://www.whizz-kidz.org.uk/>
See Facebook: <https://www.facebook.com/whizzkidz/>

Whizz-Kidz, 2nd Floor, 30 Park Street, London SE1 9EQ
Company limited by guarantee. Registered in England and Wales (No. 2444520). Registered Charity No. 802872.

Stiltskin at the Soapbox Children's Theatre

On the corner of Milne Place and Exmouth Road, Devonport Park, Plymouth PL1 4RD

Stiltskin's Soapbox Children's Theatre is Devon's award winning independent children's theatre based in Plymouth and one of only a handful of theatres in Britain that specialise in producing theatre and cultural events for children.



Cobweb's Magical Garden

Various Thurs 10—Sat 26 Jun 2021

11am / 1:30pm

Price: Early Bird Tickets

£10 / £12 / Under 1yrs FREE

Come and find out who lives at the bottom of the garden. Stiltskin's spring show for little people under 8yrs and their big people!



Bubblicious Baby & Family Raves

Saturday 26 June 2021

Baby Rave: 1—3pm & Family Rave: 4—6pm

Price: Early Bird Tickets

£10 / £12 / Under 1yrs FREE

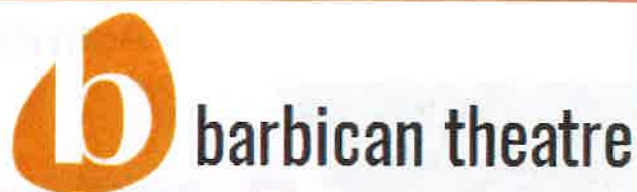
Join us for a super special family-friendly dance party with UV decor, smoke, bubbles, walk-about-performers, parachute games and lots more. Includes free UV/glitter makeover and arts and crafts chill-out area.

Workshops & Clubs

Stiltskins Children's Theatre Company also offer pre-school activities during the day and after school and holiday clubs for children age 4-15 years.

For more information see:

<https://stiltskin.org.uk/>



ReBels

Opportunities for young people at the Barbican Theatre... Register your interest at joining ReBels at [ReBels Training](#)

Barbican Theatre talent development classes have returned for 12-25 year olds—only £60 for an entire year! There will be more opportunities and classes to join

Alongside weekly classes there will be a much wider range of masterclasses and workshops (from VJ-ing, to Projection mapping, to composing for choreography) and online workshops through the [B-Hive](#).

ReBels Spring 2021 Programme

- [ReBels ages 12-15](#) (theatre and dance)
- [ReBels ages 15 - 25](#) (theatre and dance)
- [ReBels Music ages 15-25](#) (song writing, DJing, producing, recording, beat boxing, label management)
- [Masterclasses ages 15 - 25](#) (theatre, dance, tech, finance and more)
- [ReBels Techniques Workshops ages 15-25](#) (theatre and dance)

ReBels BHive

This is an online group to develop online content like podcasts, films and live-streaming. So if you're not ready for face-to-face yet, you can still be part of the [ReBels B-Hive](#).

Follow the Barbican Theatre
Facebook page:

[https://www.facebook.com/
BarbicanTheatrePlymouth/](https://www.facebook.com/BarbicanTheatrePlymouth/)

Visit the Barbican Theatre website:

<https://barbicantheatre.co.uk/>

PLYMOUTH INFORMATION ADVICE AND SUPPORT FOR SEND



PIAS Support to Parents

In line with Government guidelines, most of our staff are still working from home. So you can still call PIAS for information, advice and support. We are still providing our usual service by telephone, email, through our website and Facebook pages.

We now have limited office cover to provide access to our service for those who **are unable** to contact us via phone or virtual media.

Parenting Programmes

Due to coronavirus, we are now delivering virtual Parenting Programmes until further notice. We are still accepting applications for future courses online at:

www.plymouthias.org.uk/parenting-programmes

Please call us on **01752 258933** or **0800 953 1131** and press

- **Option 1 for SEND Enquiries**
- **Option 2 for Parenting Programme or enquiries**

For Enquiries

Our enquiry line is open from:

Monday—Thursday: 9.00am to 5.00pm

Friday: 9.00am to 4.30pm

Alternatively you can email us at: pias@plymouth.gov.uk

Visit our website at: www.plymouthias.org.uk

Stay up to date with the latest news and information by following us on Facebook: www.facebook.com/plymouthias/



